



SERVICE BULLETIN

Product : 15",17" LCD MONITOR	Bulletin No. : 01-C/M-E0029
Model : S/M150MP,S/M170MP	Bulletin Date : July.10,2001
	ECN Date : May.29,2000
SUBJECT : MICOM Program update	

Background : ML15,ML17 model may have small display size or color defect
 If returned set have upper symptoms please upgrade Micom program with jig.

Cause : Program error

Solution : Update Program with Micom jig for TFT monitor

Application Date : May.29,2000

(Interchangeability Code : * I.C)

Location No.	OLD (before) Parts		NEW (changed) Parts		* I.C	
	SEC Code	Description	SEC Code	Description		
					C	
Type	A type	B type	C type	D type	E type	F type
Interchange Type Code (* I.C)	OLD $\xrightarrow{\text{Early}}$ (Parts) $\xrightarrow{\text{Prod.}}$ (Prod.) NEW $\xrightarrow{\text{Late}}$ (Parts) $\xrightarrow{\text{Prod.}}$ (Prod.)	OLD $\xrightarrow{\text{Early}}$ (Parts) $\xrightarrow{\text{Prod.}}$ (Prod.) NEW $\xrightarrow{\text{Late}}$ (Parts) $\xrightarrow{\text{Prod.}}$ (Prod.)	OLD $\xrightarrow{\text{Early}}$ (Parts) $\xrightarrow{\text{Prod.}}$ (Prod.) NEW $\xrightarrow{\text{Late}}$ (Parts) $\xrightarrow{\text{Prod.}}$ (Prod.)	OLD $\xrightarrow{\text{Early}}$ (Parts) $\xrightarrow{\text{Prod.}}$ (Prod.) NEW $\xrightarrow{\text{Late}}$ (Parts) $\xrightarrow{\text{Prod.}}$ (Prod.)	Parts Addition (None New)	Parts deletion (Old Del.)
Application	Reference () Only Defected sets (\circ) Whole sets ()					
Attachment	Schematic Diagram () Component Lay-out () Exploded View () Mechanical Diagram () None () Others (0)					
Product Month : - all	Serial No. (~ from)					
Published by : C.J.Oh	Checked by : C. K.Park		Approved by : Y.K.Yoo			

SERVICE BULLETIN

MICOM PROGRAM UPGRADE PROCESS

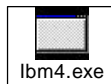
Micom jig for TFT LCD.



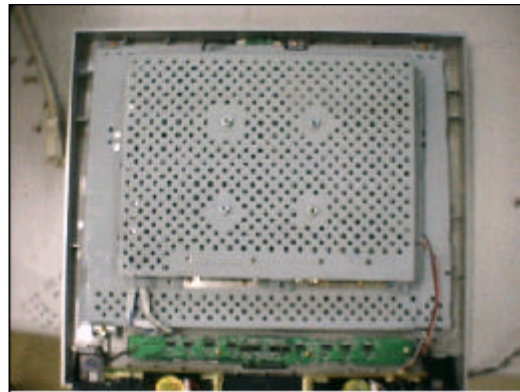
Upgrade program



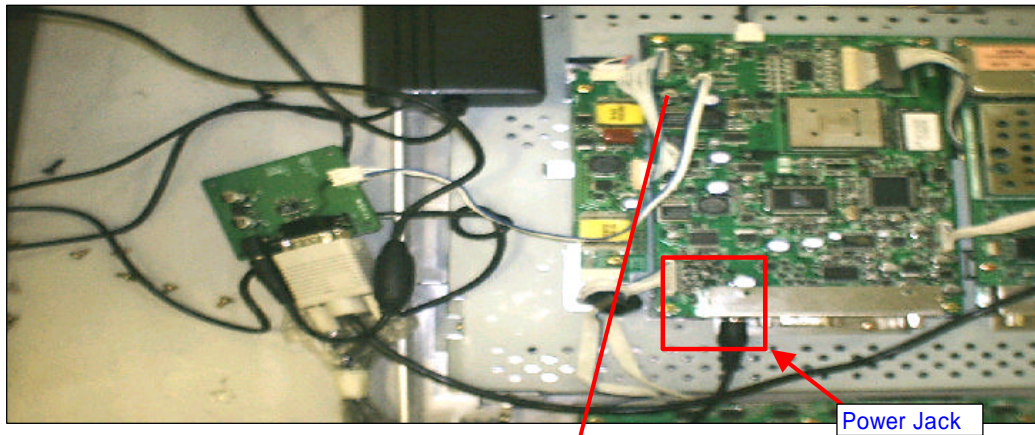
Operating program



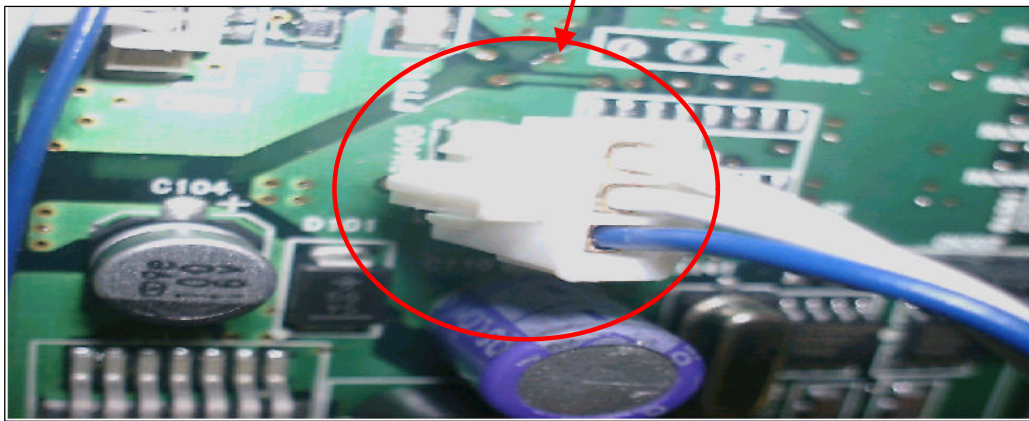
1. Open back cover & jig connection
 - Open back cover (remove screws)



- Connect 9 pin D-sub connector to COM Port 1 of Note PC
- Conect Input power to Micom Jig.
- Connect out put 3 pin connector of Micom jig to 3 pin of Monitor.

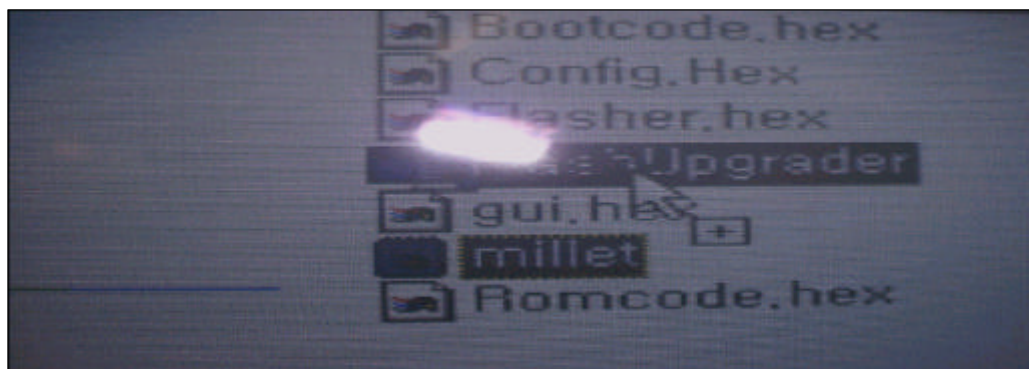


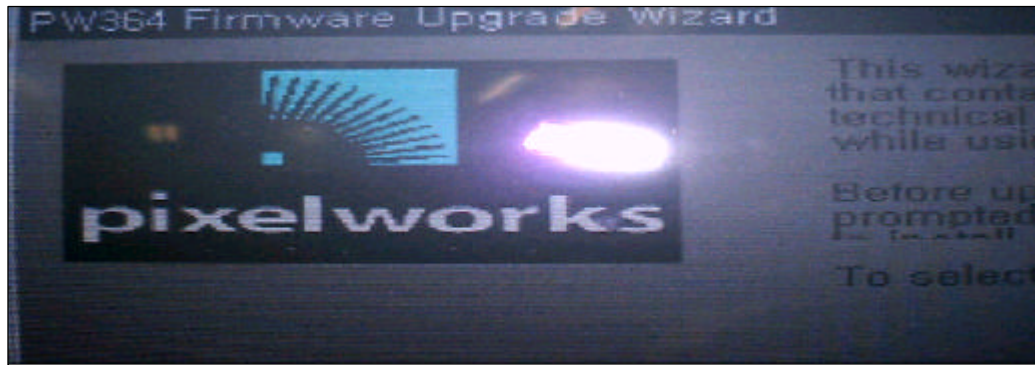
Power Jack



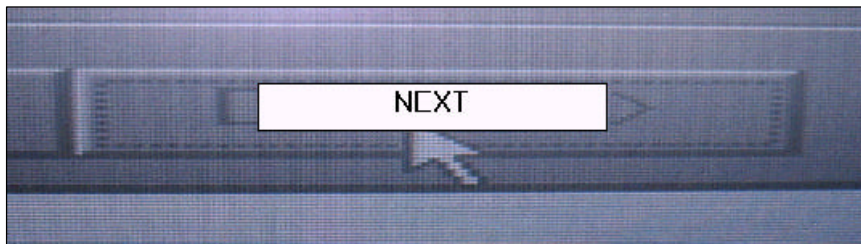
2. Program Preparing

- Make directory when program file down loading to PC.
Ex) ML15L
- Attach "Millet.inf file" to "FlashUpgrader.exe" file with one click drag.





- "PW364 Firmware Upgrade Wizard" windows will display
- Click 3 times the Next button "N" then "Next" button will be faded.



- Remove input DC jack from monitor PBA and connect again. Then download process starts.
- Click "Finish(F)" button as below picture.

- Assemble the set.

3. Color adjustment

At first connect monitor to PC and run "IBM4.exe" file.
(IBM4.exe file is a kind of pattern making program)

- Make black pattern using mouse button.
- Touch 3 buttons at a time
(Buttons : "CH" & "-" & "+")
Then, auto color adjustment will be done



- Make full white pattern using mouse button.
- Touch 3 buttons at a time
(Buttons : "Exit" & "Menu" & "-")
Then, auto color adjustment will be done



- END -